



# WFP OPERATIONS IN THE OCCUPIED PALESTINIAN TERRITORY

## SITUATION REPORT

Issue n. 4

16 - 28 April 2009

### Special points of interest:

- WFP Regional Director, Mr. Daly Belgasmi, will visit the oPt Country Office from 3 to 8 May.

### WFP in a glance

PRRO (WB) beneficiaries	320,000
EMOP Gaza beneficiaries	365,000
EMOP Food Voucher (WB) beneficiaries	30,000
Stock in Gaza (MT)	17,700
Stock in West Bank(MT)	6,600*

- Only includes WFP warehouses

### WFP operations in oPt

WFP's PRRO (Protracted Relief and Recovery Operation) started in September 2007 to meet the food needs of the most vulnerable non-refugees; it has covered both the West Bank and Gaza till December 08 and since January 09, following the conflict in Gaza and the launch of WFP's Emergency Operation (EMOP) Lifeline Gaza, it has been assisting beneficiaries in the West Bank only. The PRRO consists of four main interventions: (i) Emergency relief for the destitute (in partnership with the MoSA); (ii) Livelihood support for vulnerable households (poor farmers, unemployed workers and vulnerable women most affected by poverty and who have only partial means to cope with food insecurity); (iii) School feeding in the most food-insecure areas through cash-for-work activities, (nutritious snacks are prepared by bakeries and women centres which receive food commodities and cash from WFP); and (iv) Food-for-Work (FFW) and Food-for-

Training (FFT) to contribute to and promote self-reliance by preserving agricultural assets to restore livelihoods. Following the conflict in Gaza, two new operations were launched: the EMOP Operation Lifeline Gaza and the Logistics Cluster Special Operation (SO). The EMOP targets 365,000 beneficiaries (i.e. 80 percent of the non-refugee population in Gaza) and its main objectives are: (i) meeting urgent needs and improving food consumption for conflict-affected people through the timely provision of food rations and food vouchers; and (ii) maintaining enrolment of girls and boys in assisted schools at pre-crisis levels through school feeding coverage targeting 50,000 children. The Logistics Cluster is led by WFP and operates to support UN agencies, local/international NGOs and international organizations with: (i) cargo movement facilitation and transport to Gaza; (ii) civil/military coordination; (iii)



B. Stevens/Cosmos - School Feeding children in Nablus

logistics information management; (iv) transit hub for cargo consolidation and preparation; and (v) Humanitarian Coordinator/UNRWA/OCHA liaison. To respond to the high food prices, WFP launched a Food Voucher EMOP in the West Bank (that will be implemented at a later stage in Gaza as well) covering approximately 5,500 families in urban areas, selected on the basis of two key studies conducted in 2008 (Safety Net Mission and Rapid Joint Food Security Assessment).

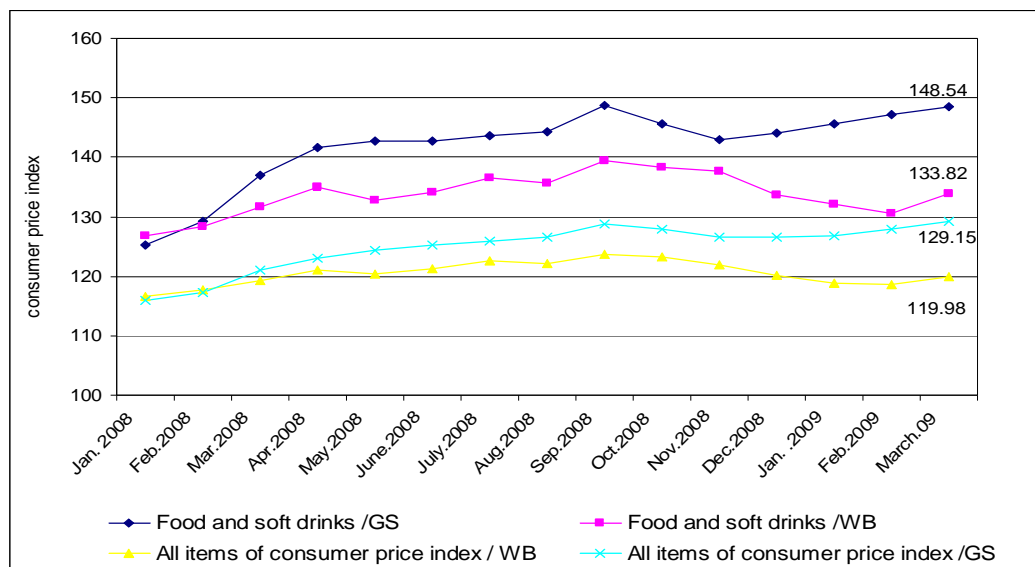
### Operational Update

Food distributions are ongoing in the West Bank, with 702 mt distributed and about 74,000 beneficiaries reached last week, in collaboration with the MoSA, MoE, CRS and the Near East Foundation (NEF). 19 truckloads (630 mt) were dispatched into the West Bank transporting wheat flour, chickpeas and sugar. 120 mt were distributed to 26,500 beneficiaries in Gaza last week, while 1,885 mt (63

trucks) were delivered in Gaza, including wheat flour, canned meat, chick peas and high energy biscuits. Distribution cycles in Gaza have been completed in collaboration with MoSA, while CHF and OXFAM are on going. Through the Logistics Cluster, during the reporting period WFP facilitated the access of 62 mt of food parcels for Caritas, family hygiene kits for Save the Children and blankets for

PARC. The Logistics Cluster continues to request clearance for the following cargoes rejected at Gaza crossing: Mercy Corps constructing material (delayed since 1 April), UNICEF children's toys (delayed since 3 March), UK medical equipment (delayed since 30 January) and FAO veterinary supplies (delayed since 19 February).

Consumer Price Index (CPI) in West Bank and Gaza from January 2008 to March 2009 (base: year 2004) - Source: PCBS



## Food Security in oPt

The West Bank and Gaza Strip Food Consumer Price Index (CPI) followed a similar trend from January 2008 to November 2008: a steady increase with no significant fluctuation. However, between November 2008 to March 2009, Gaza experienced a more rapid increase in food CPI than the West Bank. This is mainly due to the tightened security restrictions and the conflict in the last months which caused a soaring in the food prices more in Gaza rather than in the West Bank. The food CPI in Gaza increased by 4.1 percent in March 2009 compared to March 2008 (from 136.9 to 148.5), while West Bank food CPI increased by 0.7% in the same period.

The increment of the international prices in the past months led to a fluctuating inflation rate as most commodities of the consumer basket are imported. In addition, the appreciation of the Israeli shekel vis-à-vis the US dollar affected the real income of Palestinians, given that a large amount of the donor assistance and remittances are in US dollars.

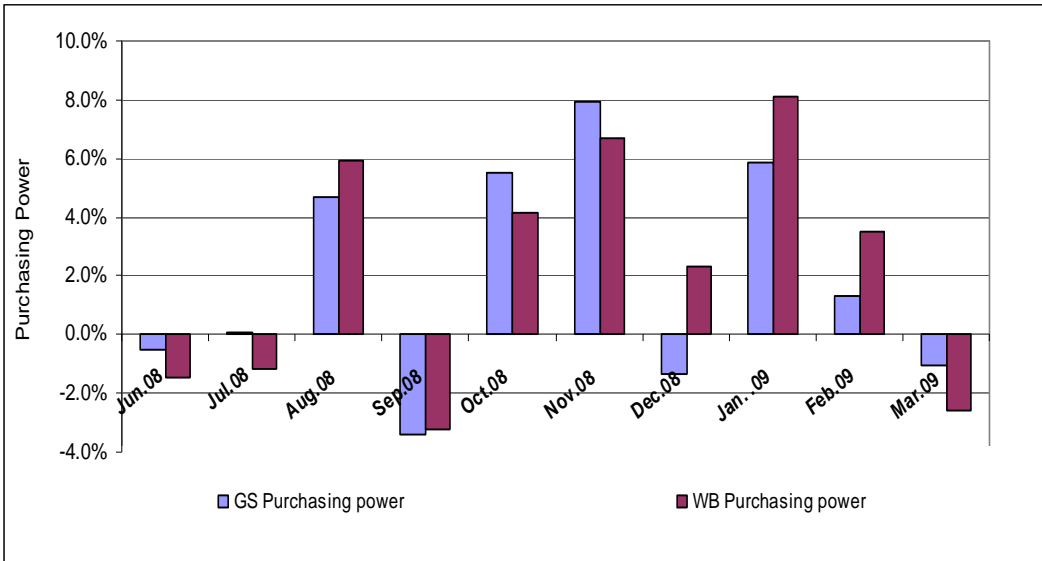
As a consequence, the purchasing power will also be changing. The graph on page 3 shows the purchasing power (in US\$) decreasing in December 2008 by 1.3 percent from November 2008, following the food CPI increase. The purchasing power in Gaza began to increase to reach 1.3 percent in February 2009, but continued to remain lower than the one in the West Bank. While in February 2009 the purchasing power stood at 3.5 percent, in March 2009 it decreased in West Bank and Gaza by 3 percent and 1 percent respectively. The reduction in purchasing power in both Gaza and the West Bank is due to the reduction in the exchange rate (USD/NIS) in the last months and the increment of CPI in March 2009.

In Gaza, around 14.6 percent of the total cultivated areas (about 170,000 dunums before 27 December 2008) have been completely destroyed during the last conflict. Moreover, the soil in the Strip is now polluted with heavy metals and white phosphorous and will negatively impact the agricultural

sector. The total value of the direct damages on the agricultural sector is estimated at over US\$ 180 million, while indirect damages amount to about US\$ 88 million.

As a result of the last offensive on Gaza, 7,700 jobs have been lost given the damages incurred to private businesses and agricultural establishments. More than 1,700 households lost their main sources of income due to death or injury and/or damages on institutions that are considered as sources of income for many people.

Purchasing power's monthly trend (in US\$) in Gaza and West Bank from June 2008 to March 2009  
 Source: Exchange rate: Bank of Israel - CPI: PCBS



### Assessments

Following the Rapid Food Security Assessment in Gaza conducted in January 2009 in collaboration with FAO, a Food Security Assessment is now taking place in Gaza in collaboration with the Palestinian Central Bureau of Statistics (PCBS) and FAO. The data collection is ongoing and the preliminary results will be shared in May.

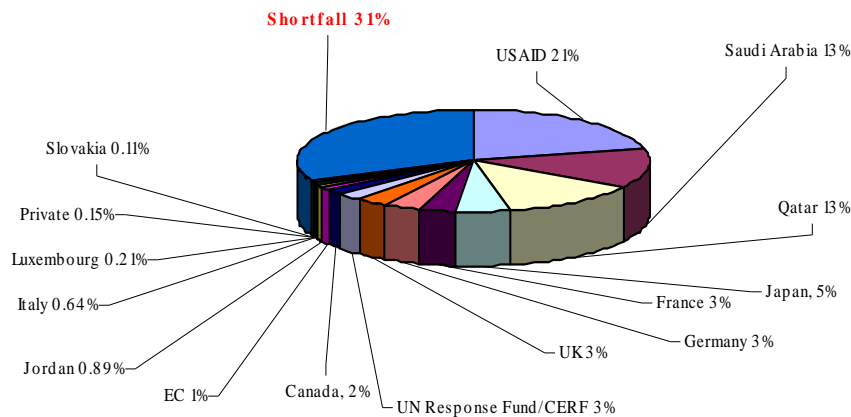
The data collection of a similar Food Security Assessment, also in collaboration with PCBS and FAO, has just been completed in the West Bank. Results will also be available in May.

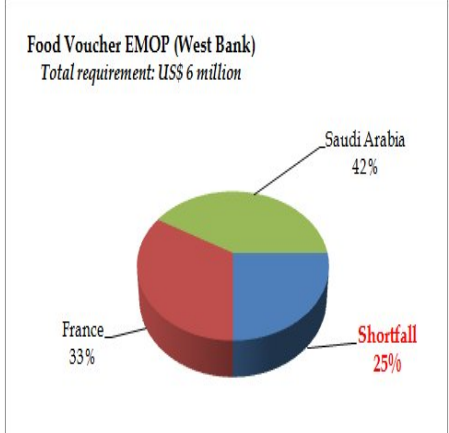
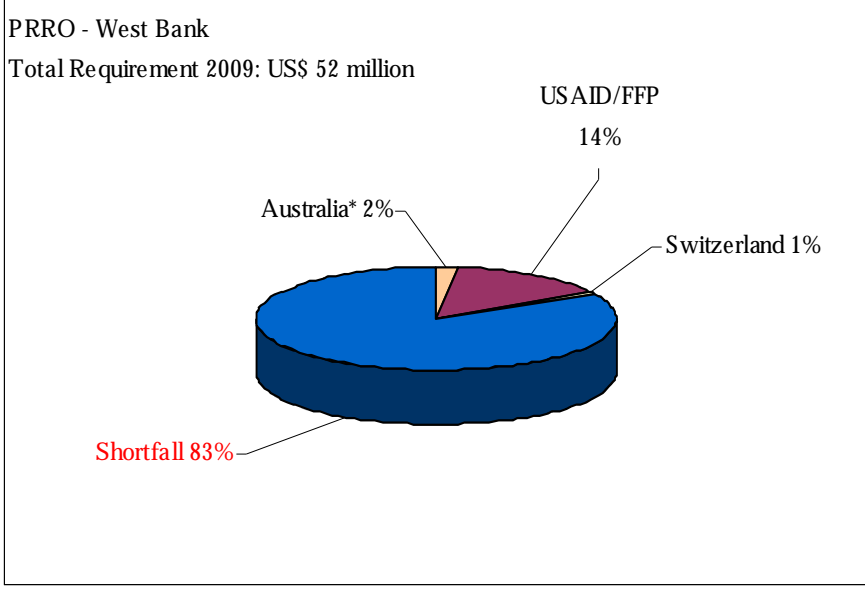
A Food Security Atlas is being prepared by WFP in collaboration with the Applied Research

Institute of Jerusalem and will be available by August 2009.

### EMOP - Operation Lifeline Gaza

Total Requirement 2009: US\$ 78.9 million



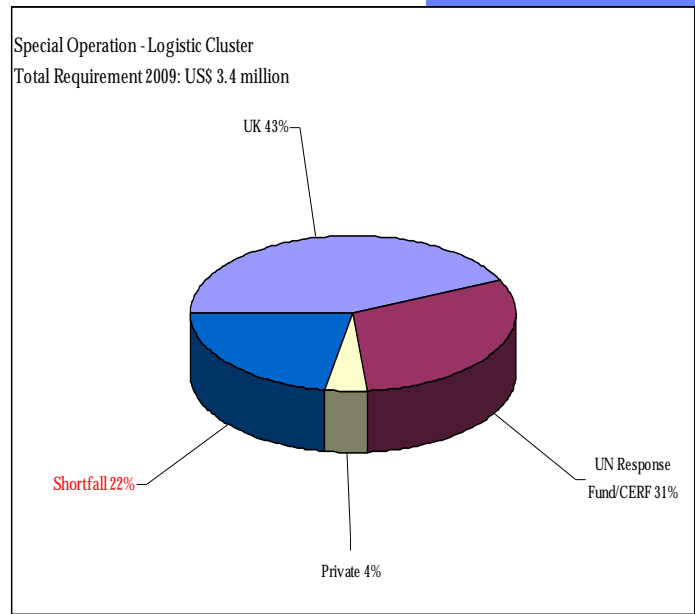


\*Australia's contribution was in support of the population in Gaza. When the donation was confirmed, the PRRO was the only WFP operation and, considered the funding situation in the West Bank, Australia kindly agreed to leave its generous contribution for the PRRO.

### Shortfalls & Needs

At the moment the top five donors to WFP oPt are: USAID, the European Commission, Saudi Arabia, Italy and Qatar. We thank our donors for their generous contributions to the Gaza EMOP. However, if the current funding level does not timely improve, WFP will be forced to reduce its beneficiary caseload and/or the energy value of the food rations distributed in Gaza by September. The funding situa-

tion of the West Bank PRRO is quite worrisome, with a pipeline break expected by July. A reduction/suspension of WFP operations in the West Bank and/or Gaza would have severe consequences on the food security level of the Palestinian families, which are in need of and highly dependent on food assistance.



You have a comment or a question on the content of this report?

Please contact Barbara Conte, Reporting & Donor Relations Officer, at [Barbara.Conte@wfp.org](mailto:Barbara.Conte@wfp.org) or 054 591 81 51